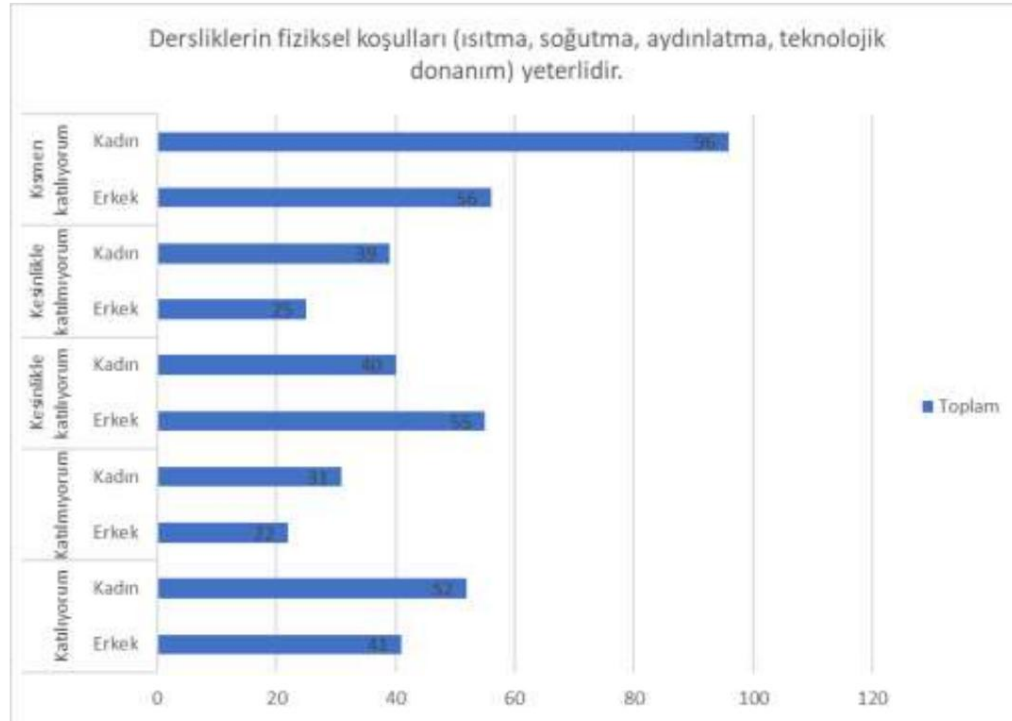
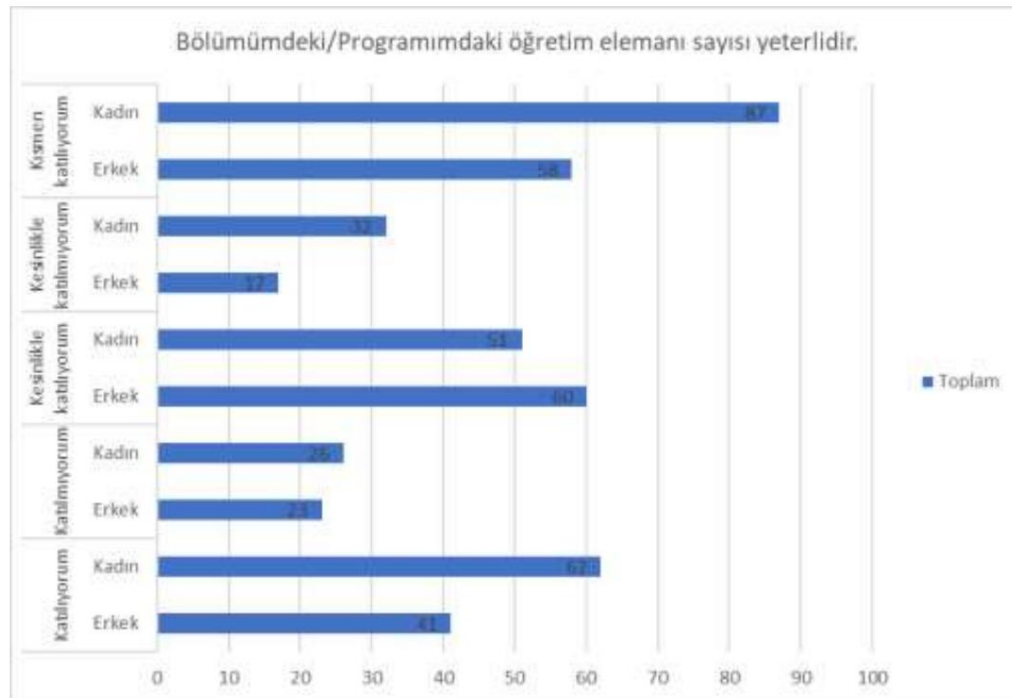


FACULTY OF ARCHITECTURE AND DESIGN 2022
STUDENT SATISFACTION SURVEY RESULTS

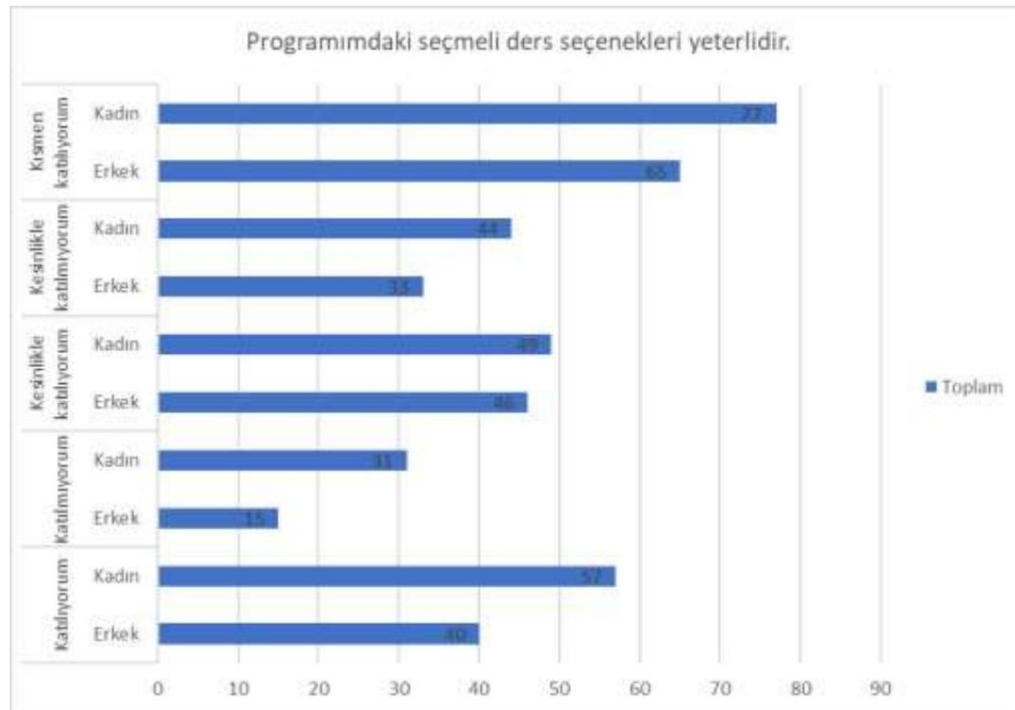
1- Education-Training



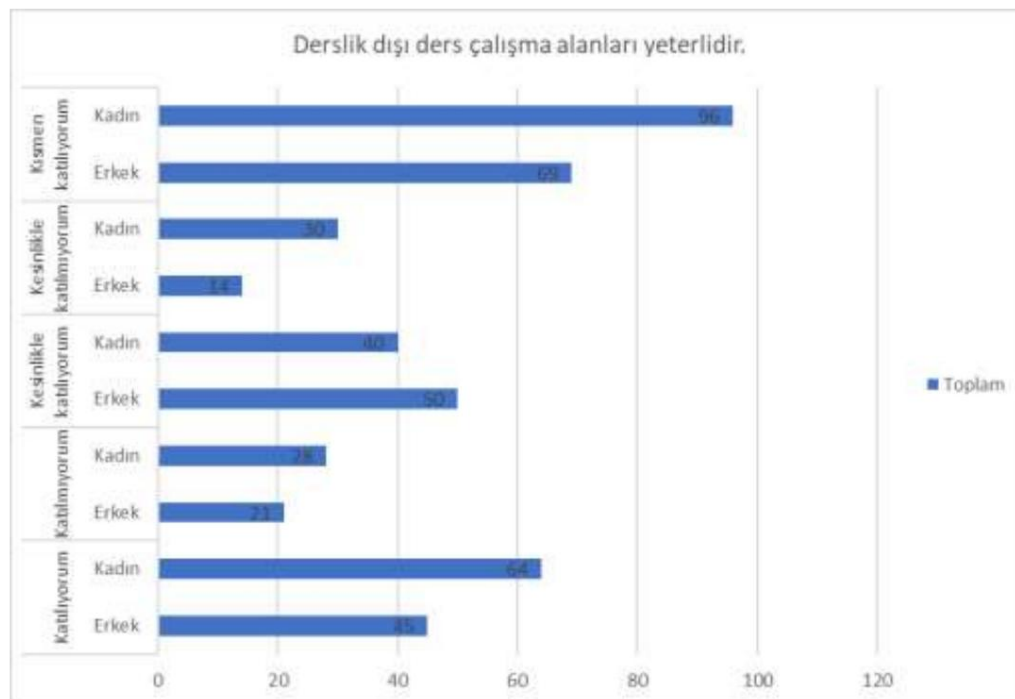
A total of 93 people said "I agree" to the statement "The physical conditions of the classrooms (heating, cooling, lighting, technological equipment) are sufficient", 53 people "disagree", 95 people "strongly agree", 64 people "strongly disagree", 152 people "partially agree". He answered.



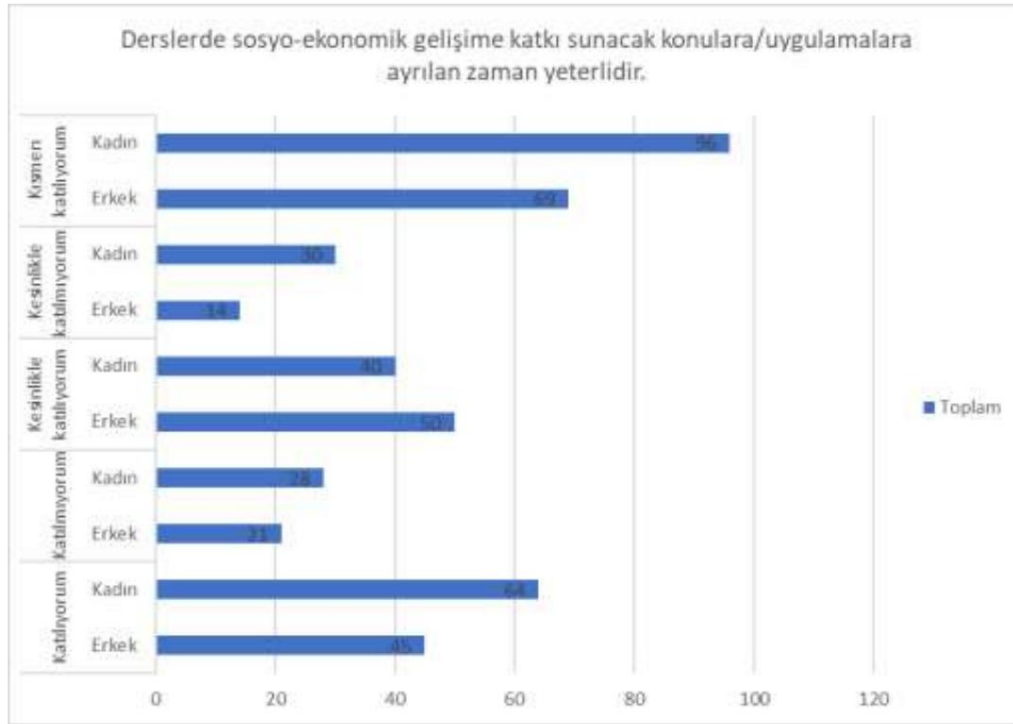
To the statement "The number of faculty members in my department/program is sufficient", a total of 103 people answered "I agree", 49 people answered "I disagree", 111 people answered "I strongly agree", 49 people answered "I strongly disagree", and 145 people answered "Partly agree".



A total of 97 people "agree", 46 people "disagree", 95 people "strongly agree", 77 people "strongly disagree", 142 people "partially agree" to the statement "The elective course options in my program are sufficient". He answered.



To the statement "Study areas outside the classroom are sufficient", a total of 72 people answered "agree", 71 people answered "disagree", 75 people answered "strongly agree", 95 people answered "strongly disagree", and 144 people answered "partially agree".



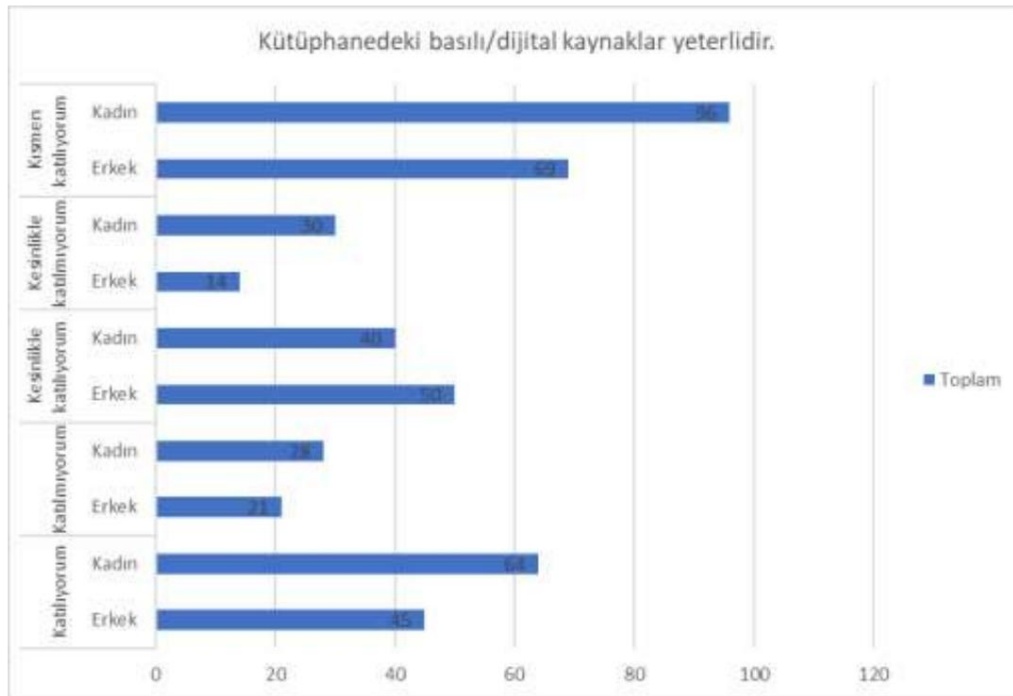
"The time allocated in lessons to subjects/applications that will contribute to socio-economic development is sufficient."

A total of 106 people answered "I agree", 63 people answered "I disagree", 79 people answered "I strongly agree", 60 people answered "I strongly disagree", and 149 people answered "Partly agree".



A total of 80 people said "I agree" to the statement "International student exchange opportunities related to my department/program are sufficient", 57 people said "I disagree", 76 people said "I definitely agree", 101 people said "I totally disagree", 143 people said "I totally disagree". The person answered "I partially agree".

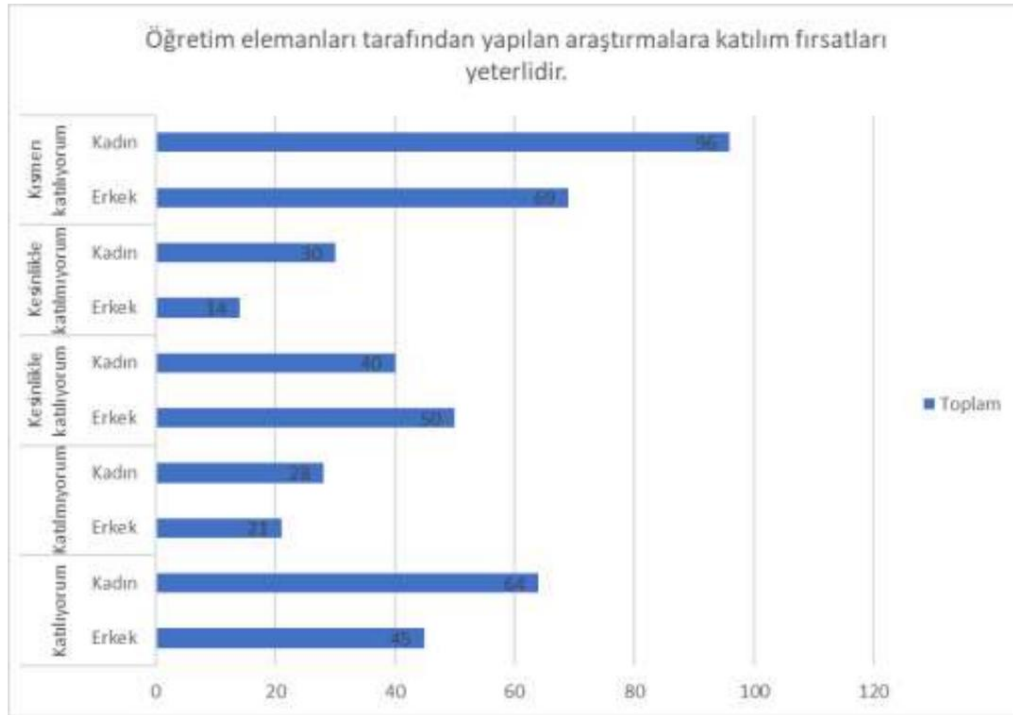
2-Research and Development



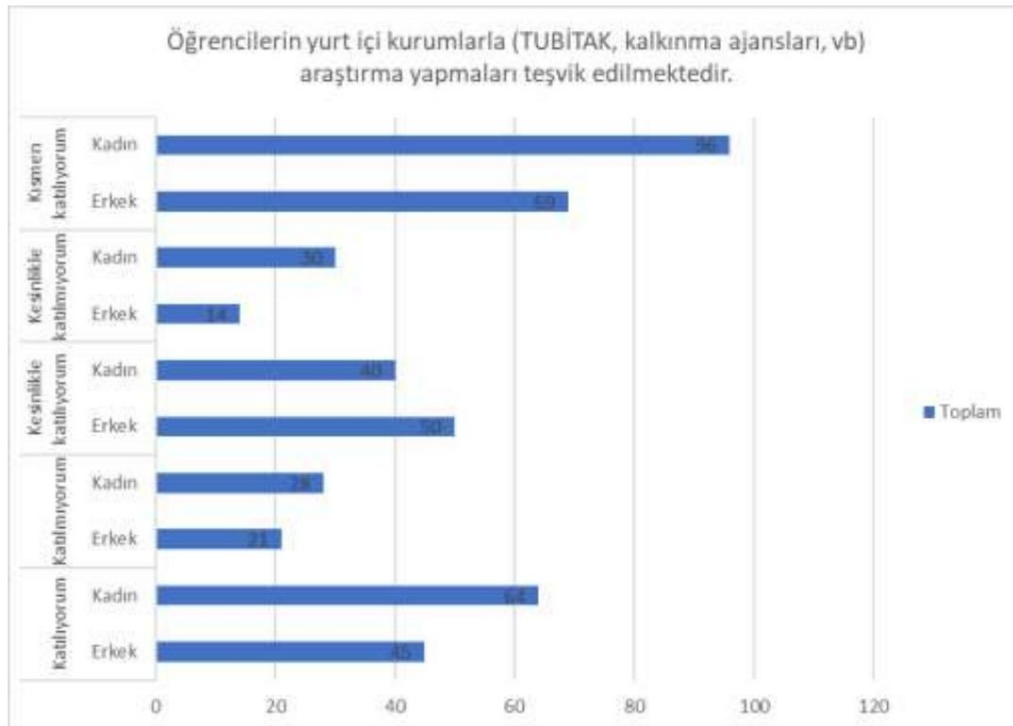
A total of 126 people answered "I agree", 35 people "disagree", 103 people "strongly agree", 39 people "strongly disagree", 154 people "partially agree" to the statement "printed/digital resources in the library are sufficient".



A total of 103 people said "I agree" to the statement "Facilities for research (laboratory, center, digital platforms, etc.) are sufficient", 66 people "disagree", 70 people "strongly agree", 53 people "strongly disagree", 165 people "partially agree". He answered.

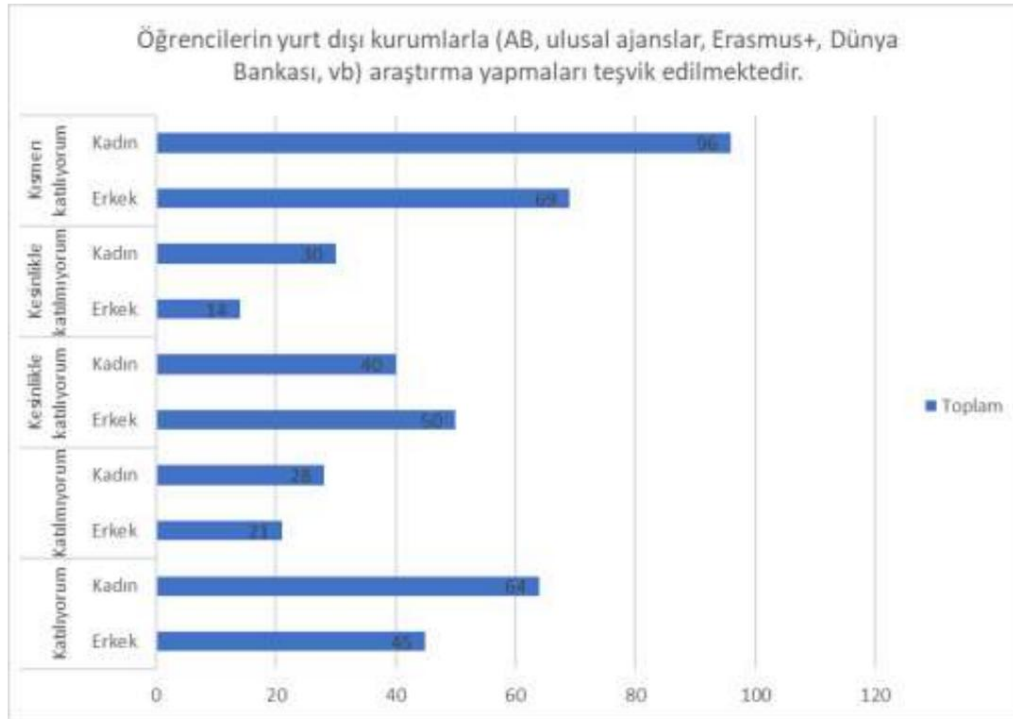


To the statement "Opportunities to participate in research conducted by faculty members are sufficient", a total of 108 people answered "agree", 50 people answered "disagree", 79 people answered "strongly agree", 51 people answered "strongly disagree", and 169 people answered "partially agree".



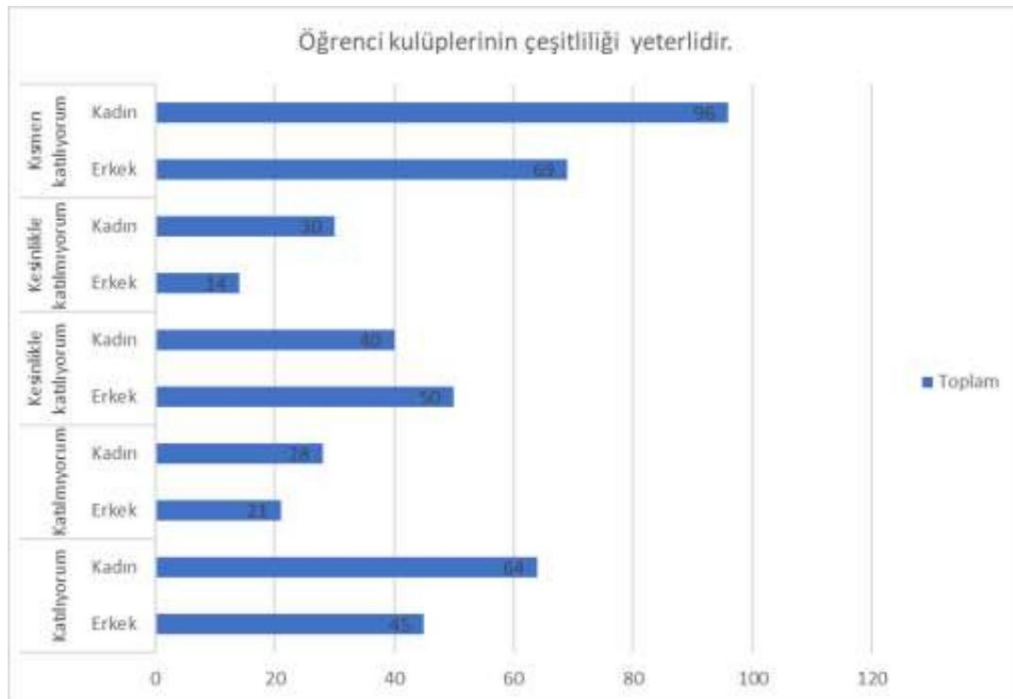
"Students are encouraged to conduct research with domestic institutions (TUBİTAK, development agencies, etc.)"

A total of 107 people answered "I agree", 46 people "disagree", 78 people "strongly agree", 66 people "strongly disagree", 160 people "partially agree".

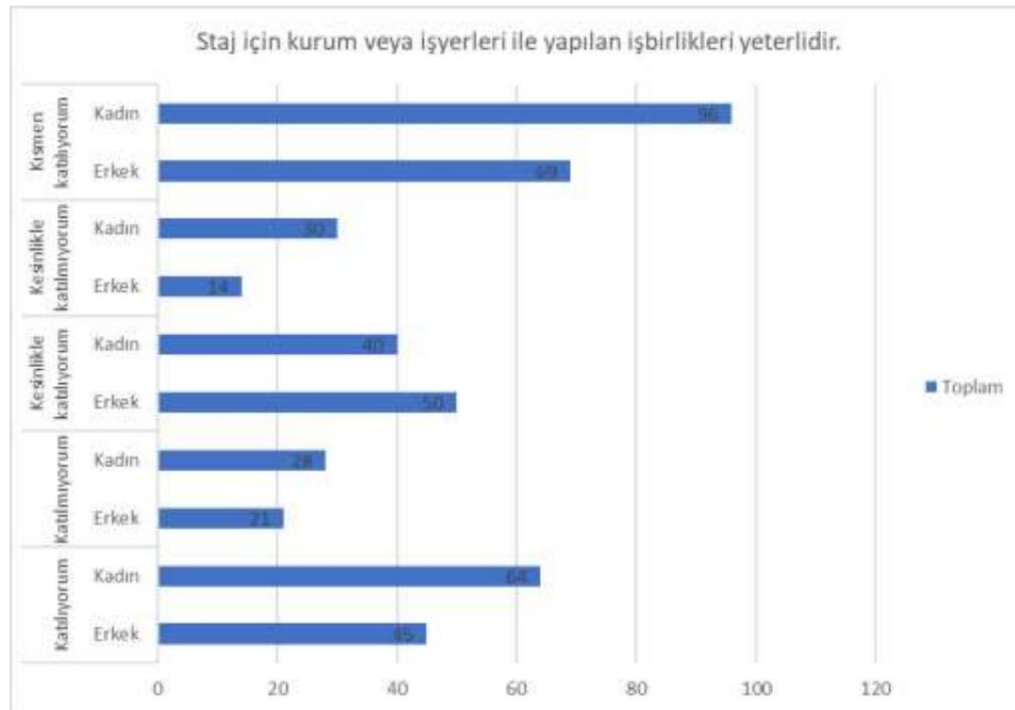


A total of 92 people said "I agree", 56 people "disagree", 76 people "strongly agree", 81 said "Students are encouraged to conduct research with foreign institutions (EU, national agencies, Erasmus+, World Bank, etc.)". 1 person answered "strongly disagree" and 152 people answered "partially agree".

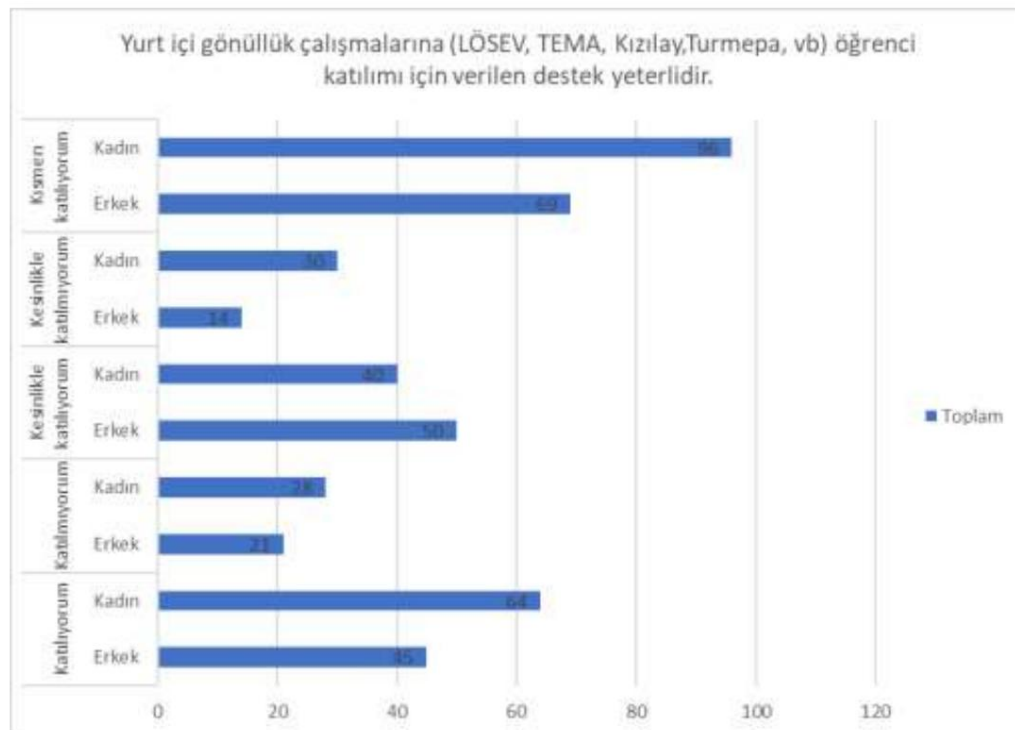
3- Social Contribution



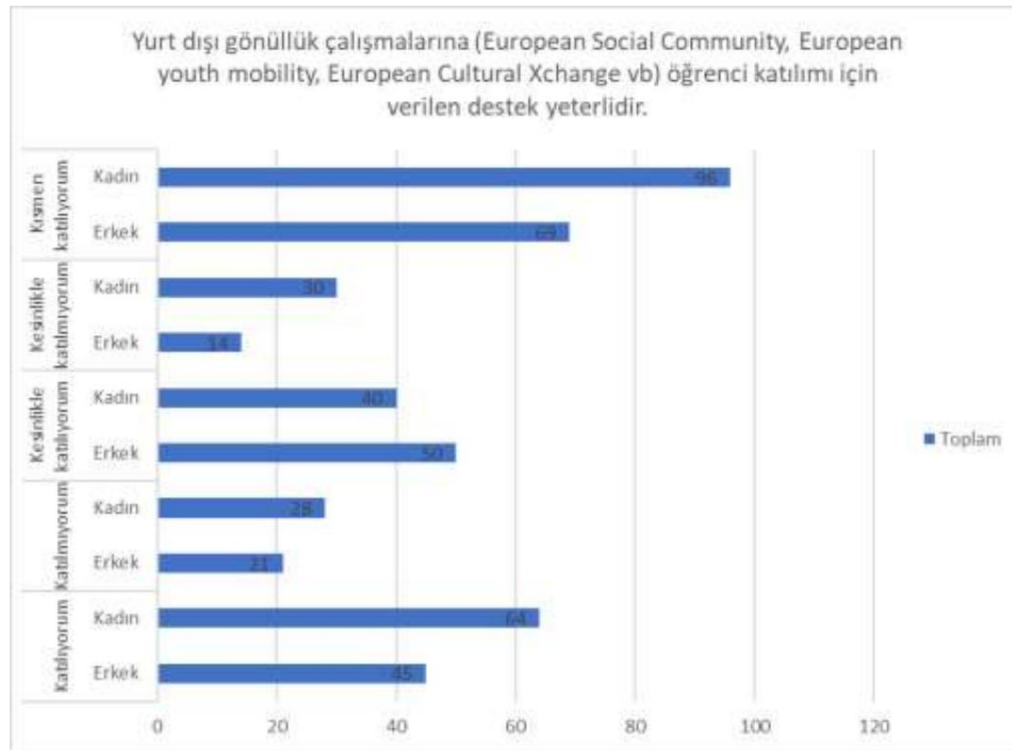
A total of 91 people answered "I agree", 46 people "disagree", 90 people "strongly agree", 77 people "strongly disagree", 153 people "partially agree" to the statement "The diversity of student clubs is sufficient".



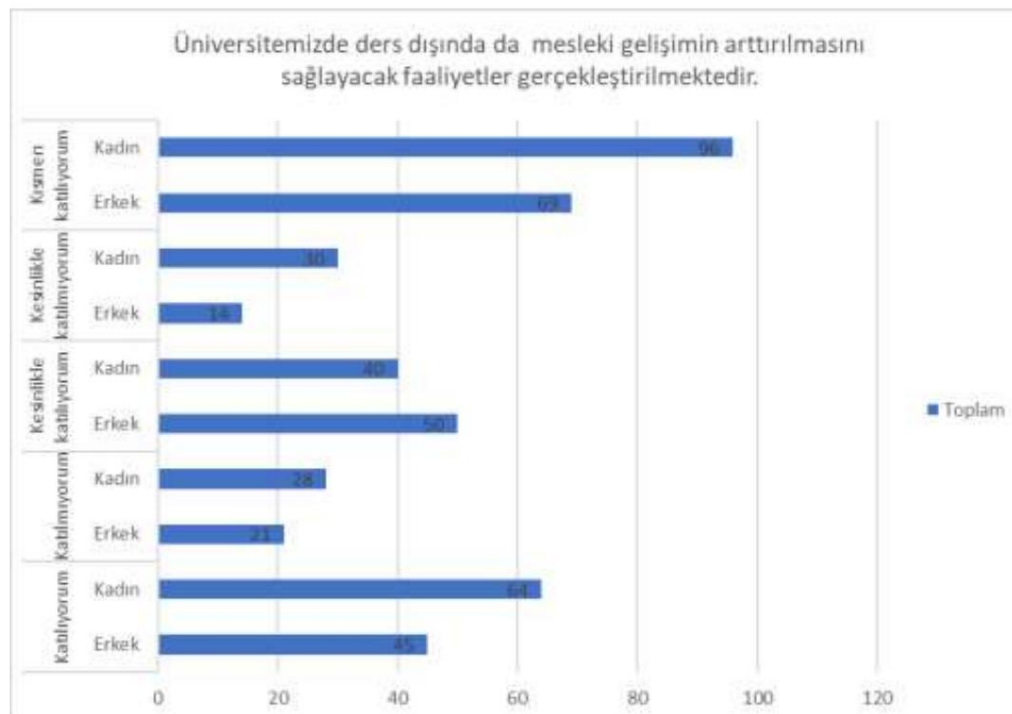
A total of 98 people "agree", 43 people "disagree", 72 people "strongly agree", 73 people "strongly disagree", 171 people "partially agree" with the statement "Cooperations with institutions or workplaces are sufficient for internship". He answered.



A total of 96 people said "I agree" to the statement "The support provided for student participation in domestic volunteering activities (LÖSEV, TEMA, Kızılay, Turmepa, etc.) is sufficient", 46 people said "I disagree", 79 people said "I definitely agree", 65 people said "I definitely disagree"., 171 people answered "partially agree".

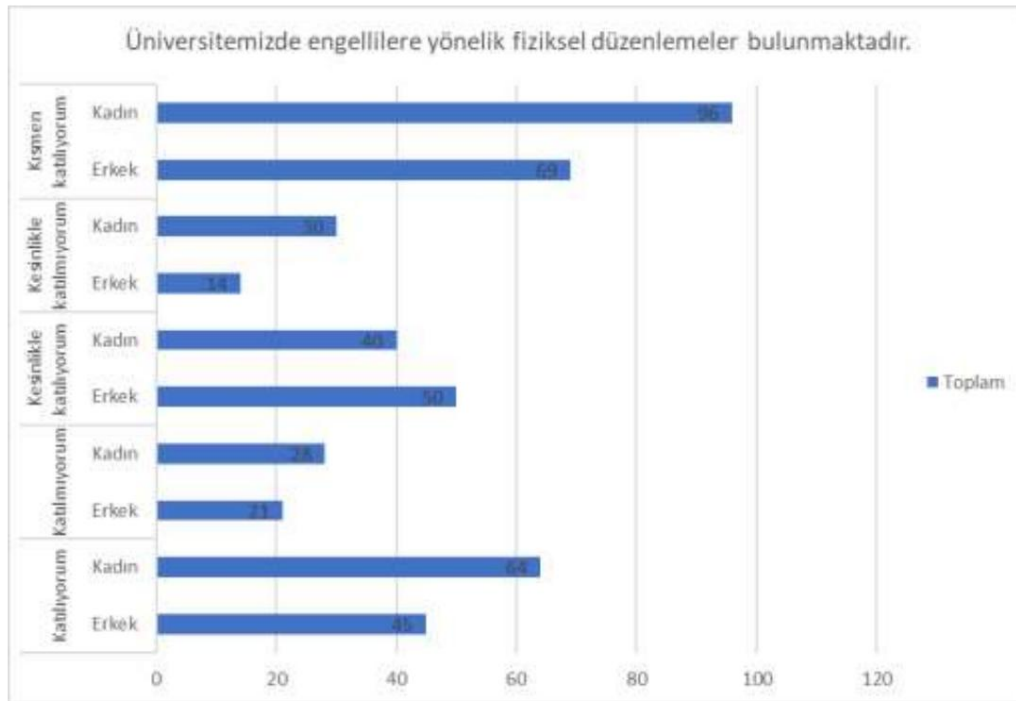


A total of 73 people said "I agree" to the statement "The support provided for student participation in volunteering activities abroad (European Social Community, European youth mobility, European Cultural "I strongly disagree", 171 people "I partially agree" He answered.

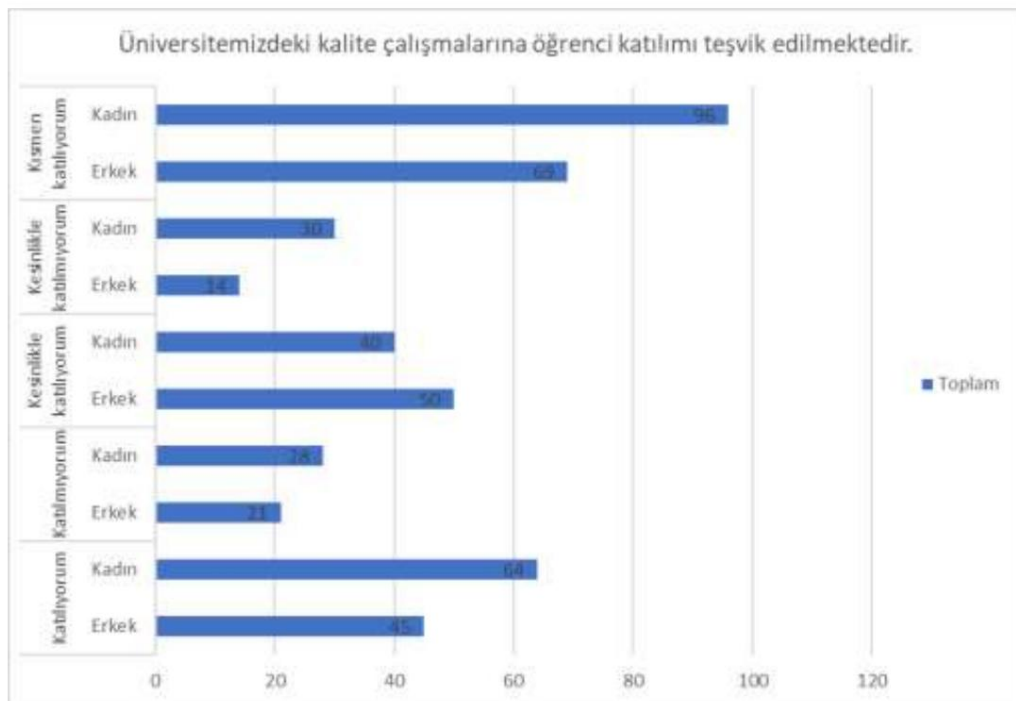


"At our university, activities are carried out outside the classroom to increase professional development." A total of 78 people answered the statement "I agree", 52 people said "I disagree", 83 people said "I totally agree", 90 people said "I totally disagree", and 154 people answered "Partly agree".

4- Quality, Management and Leadership

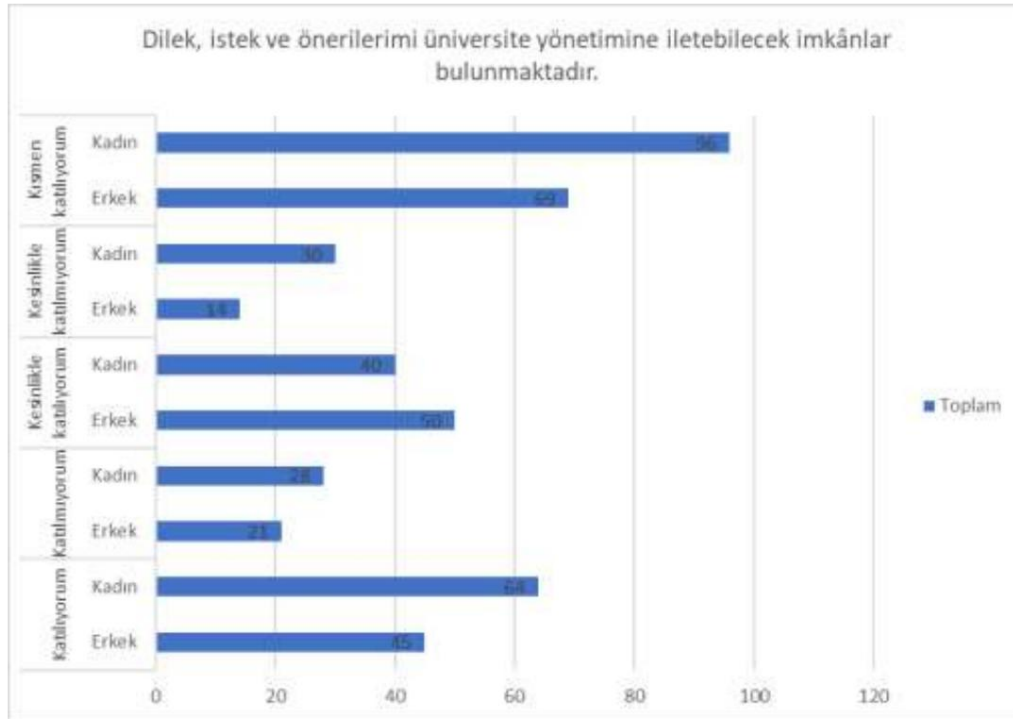


To the statement "Student participation in quality studies at our university is encouraged", a total of 85 people answered "agree", 47 people answered "disagree", 83 people answered "strongly agree", 70 people answered "strongly disagree", and 172 people answered "partially agree".

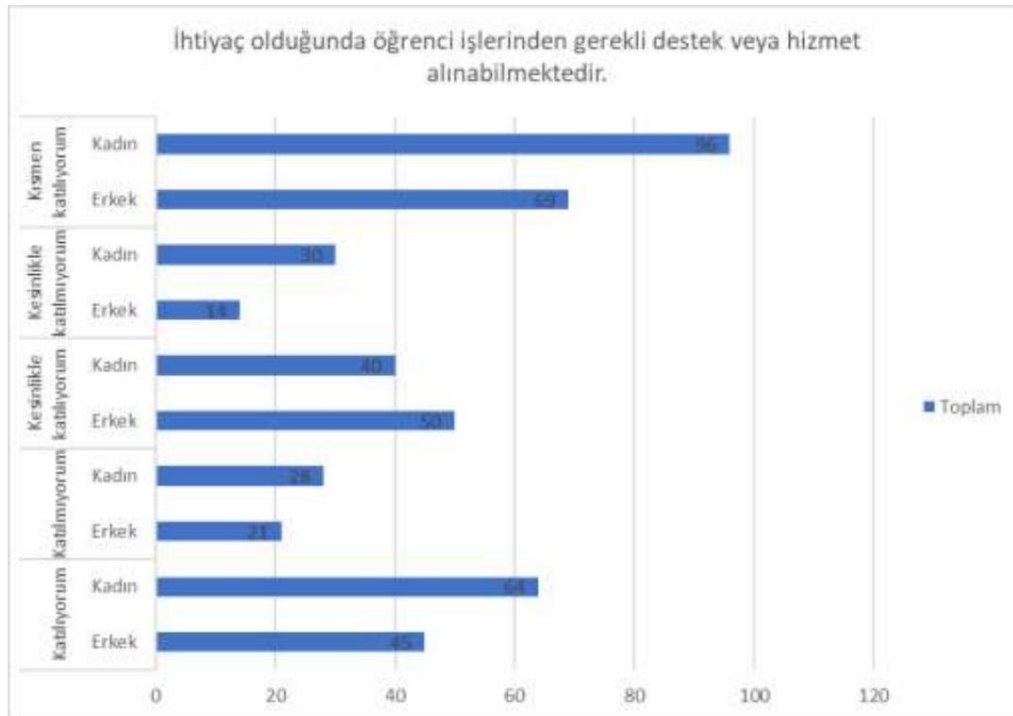


A total of 96 people said "I agree", 48 people "disagree", 82 people "strongly agree", 55 people "strongly disagree", 176 people stated "Student participation in quality studies at our university is encouraged".

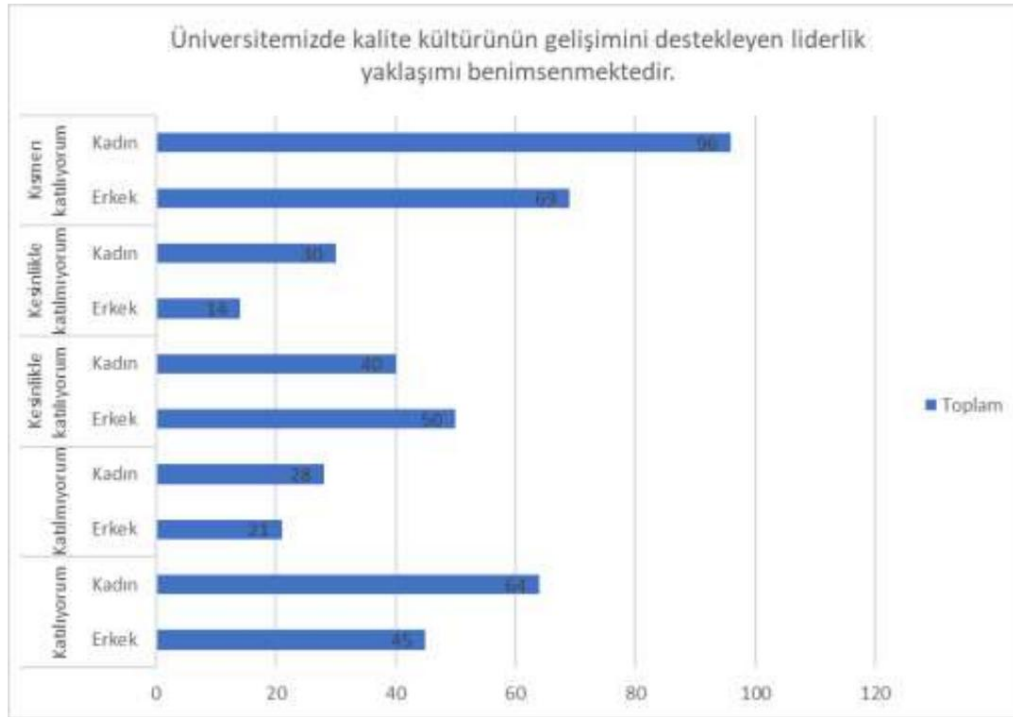
The person answered "I partially agree".



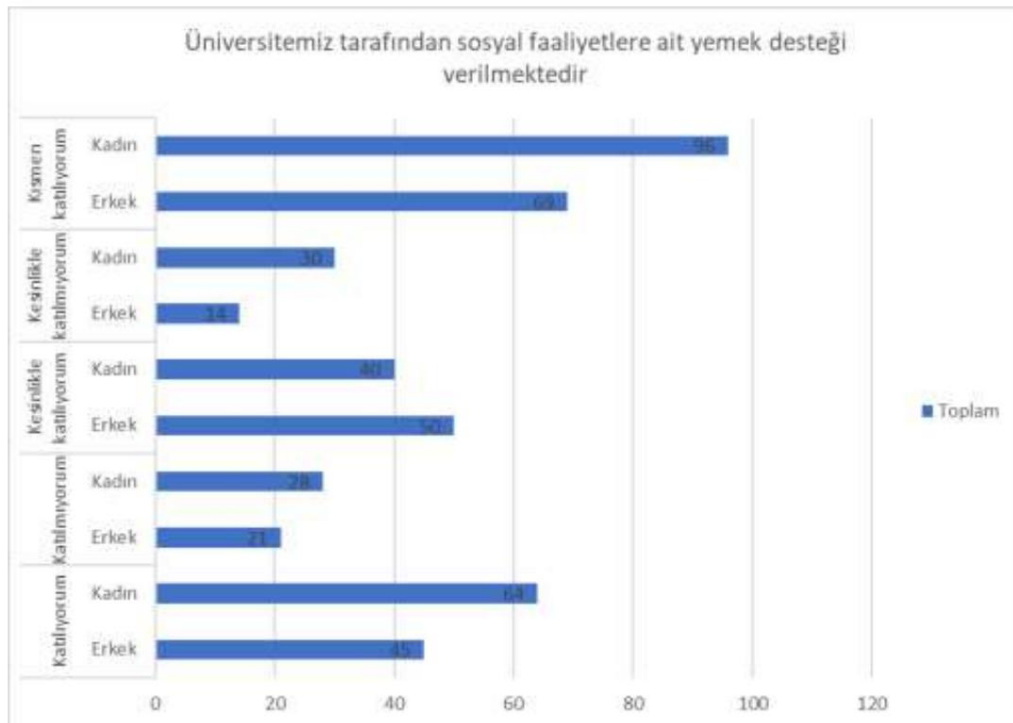
To the statement "There are opportunities to convey my wishes, requests and suggestions to the university administration", a total of 101 people answered "I agree", 56 people said "I disagree", 92 people said "I definitely agree", 56 people said "I totally disagree", and 152 people answered "Partly agree".



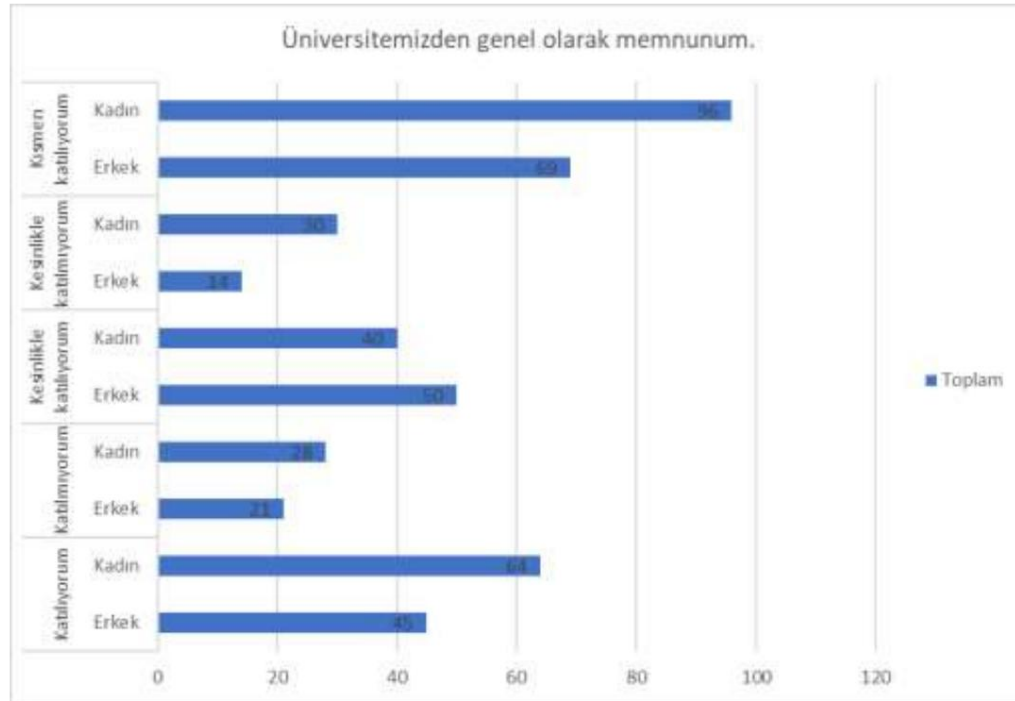
A total of 104 people said "I agree" to the statement "Necessary support or service can be received from student affairs when needed", 50 people said "I disagree", 87 people said "I strongly agree", 51 people said "I strongly disagree", 165 people said "I strongly disagree". The person answered "I partially agree".



To the statement "Our university adopts a leadership approach that supports the development of a quality culture", a total of 87 people answered "I agree", 57 people answered "I disagree", 86 people answered "I strongly agree", 53 people answered "I strongly disagree", and 174 people answered "Partly agree".



To the statement "Our university provides food support for social activities", a total of 95 people answered "I agree", 50 people said "I disagree", 78 people said "I definitely agree", 67 people said "I totally disagree", and 167 people answered "Partly agree".



To the statement "I am generally satisfied with our university", a total of 109 people answered "I agree", 49 people answered "I disagree", 90 people answered "I strongly agree", 44 people answered "I strongly disagree", and 165 people answered "Partly agree".